



# TOTO

## TECHNICAL DATA SHEET

## AL-OMRAN Trading Co.

Riyadh – Saudi Arabia  
Website: [totoksa.com](http://totoksa.com)

Tel: 00966593851408

WhatsApp: 00966595333434

Email: [project@alomran.sa](mailto:project@alomran.sa)

DIGITAL CATALOGUE  
SCAN HERE



### PRODUCT DETAILS

Type	Water closet
Item Code	CS911VT + TCF87120GAA + T53WRVL
Range	NEOREST LS1 (Chrome)
Material	Vitreous China
Colour	White

### Technical Details and Description :

TOTO - NEOREST LS I Water Closet Bowl  
(S-trap) (rough in:305mm)  
Chrome remote

### ENVIRONMENTAL & TECHNICAL DATA

Flow Rate	3.8 L / 3L
-----------	------------

Flow Chart : Not Applicable

Exquisite streamlined design  
Dainty design detail in black with matching remote controller  
AIR-IN WONDER WAVE provides various cleansing modes to suit everyone's needs  
PREMIST prevents waste from clinging  
EWATER+ suppresses the accumulation of waste  
TORNADO FLUSH swirls and ejects waste entirely  
RIMLESS leaves no place for waste to hide  
CEFIONTECT forces waste to slide down  
Equipped with many more features which provide a comfortable experience for all users  
Size:725 x 411 x 497mm  
Flushing System: Tornado  
Water Consumption:3L/3.8L  
Trap Type (Rough-In):S-Trap (305mm)  
Water Pressure:0.05Mpa ~ 0.75Mpa  
Power Rating:AC220V  
Material: Bowl - Vitreous China, Seat & Cover - Plastic,  
Remote Controller – Aluminum Chrome  
Color: White  
Remarks: P-trap (120-130mm) also available

### CERTIFICATION / STANDARDS

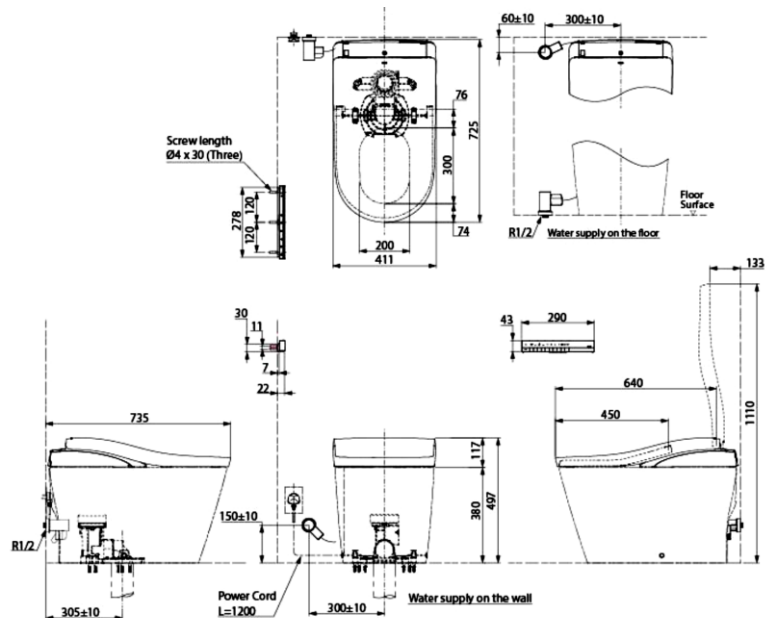
Warranty	1 Year
Standards	TOTO Industrial Standards( JIS )

### REMARKS

### IMAGE



### TECHNICAL DRAWING



NOTE : This ( CS911VT ) MAIN PRODUCT CODE not change - only will be change MAIN PRODUCT CODE end of Letter's Every Year as per SASO request

### COMPONENTS



# TOTO

## TECHNICAL DATA SHEET

## AL-OMRAN Trading Co.

Riyadh – Saudi Arabia  
Website: [alomrantrd.com](http://alomrantrd.com)

Tel: 0593851408  
WhatsApp: 0595333434  
Email: [project@alomran.sa](mailto:project@alomran.sa)

DIGITAL CATALOGUE  
SCAN HERE



### PRODUCT DETAILS

Type	Water closet
Item Code	CS911VT + TCF87120GAA + T53WRVL
Range	NEOREST LS1 (Chrome)
Material	Vitreous China
Colour	White

### Technical Details and Description :

TOTO - NEOREST LS I Water Closet Bowl  
(S-trap) (rough in:305mm)  
Chrome remote

### ENVIRONMENTAL & TECHNICAL DATA

Flow Rate	3.8 L / 3L
-----------	------------

### Flow Chart : Not Applicable

- New TORNADO FLUSH uses less water to produce powerful streams of water that travels along a hairpin curve of new RIMLESS DESIGN bowl creating a 360 degree of cleaning power that washes every spot
- PREMIST, a fine spray of mist making it difficult for dirt to adhere
- EWATER+ not only keeps toilet bowl and nozzle clean by preventing bacterial with sanitizing effect but is also sprayed under the seat to prevent other accumulated waste, ensures a long-lasting cleanliness
- Automatic operation: Lid opens, closes and toilet flushes when sensor is activated
- AIR-IN WONDERWAVE uses air rich water droplets to produce comfortable cleaning sensation
- HEATED SEAT with temperature control
- Auto powerful DEODORIZER activates after every usage
- Adjustable WARM AIR DRYING
- Hybrid Ecology System- WATER SAVING

### CERTIFICATION / STANDARDS

Warranty	1 Year
Standards	TOTO Industrial Standards( JIS )

### REMARKS

### IMAGE



### TECHNICAL DRAWING

### Important Note

- Do not use other water then allowed by the laws and ordinances of the region of use. Only use portable water.

Do not use seawater or recycled water.

- This is an electrical product. Do not install it anywhere water is likely to get on the product or anywhere with humidity high enough that water is likely to form on the surface of this product. When using the product in a bathroom, install a fan or ventilation port and ensure good air flow through the bathroom.
- If the controller is not being used over a certain period of time, the batteries in the controller are highly recommended to be removed. Batteries in the remote controller are recommended to be replaced on a yearly basis.
- The following factors may affect IR signal strength and top unit operation: product and remote control location, room size, shape, construction materials, and degree of darkness (color) of ceiling and walls.

NOTE : This ( CS911VT ) MAIN PRODUCT CODE not change - only will be change MAIN PRODUCT CODE end of Letter's Every Year as per SASO request

### COMPONENTS